

FOR RENT

BOUCHERVILLE

1190, Nobel Place

OFFICE

2,645 ft²






Michel LABBÉ

Immobilier Michel Labbé inc.
Certified Real Estate Broker AEO
m.labbe@intercomsi.com

450 655-1334



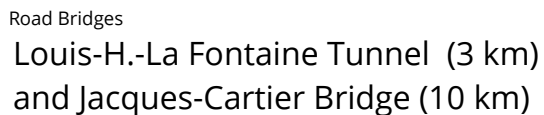
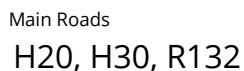
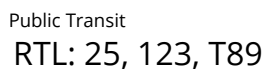
INTERCOM
SERVICES IMMOBILIERS
Agence immobilière

   intercomsi.com

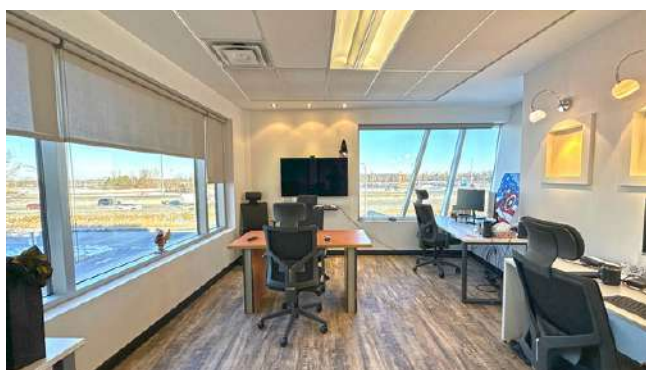
100

-

DEMOGRAPHY (5 km Radius, excluding Montreal)



2



GENERAL INFORMATION

Net Rent	\$22.00 / ft ²
Additional Rent	\$10.00 / ft ²
Electricity / Energy	Included
Maintenance	Included
Parking (shared)	Ample
Lease Term (min.)	5 years
Availability	Immediate

AVAILABLE AREA

(approximate)

Suite 201 (2nd Floor) 2,645 ft²

Subdivision of premises available on request,
minimum 1,000 ft²

Main tenants:





TECHNICAL POINTS



Construction
2003



Zoning
C-673



Lot #
2 515 391,
2 515 443



A/C
Yes



Heating
Geothermal energy



W/C
Shared



Elevator
Yes (1)



Number of floors
3

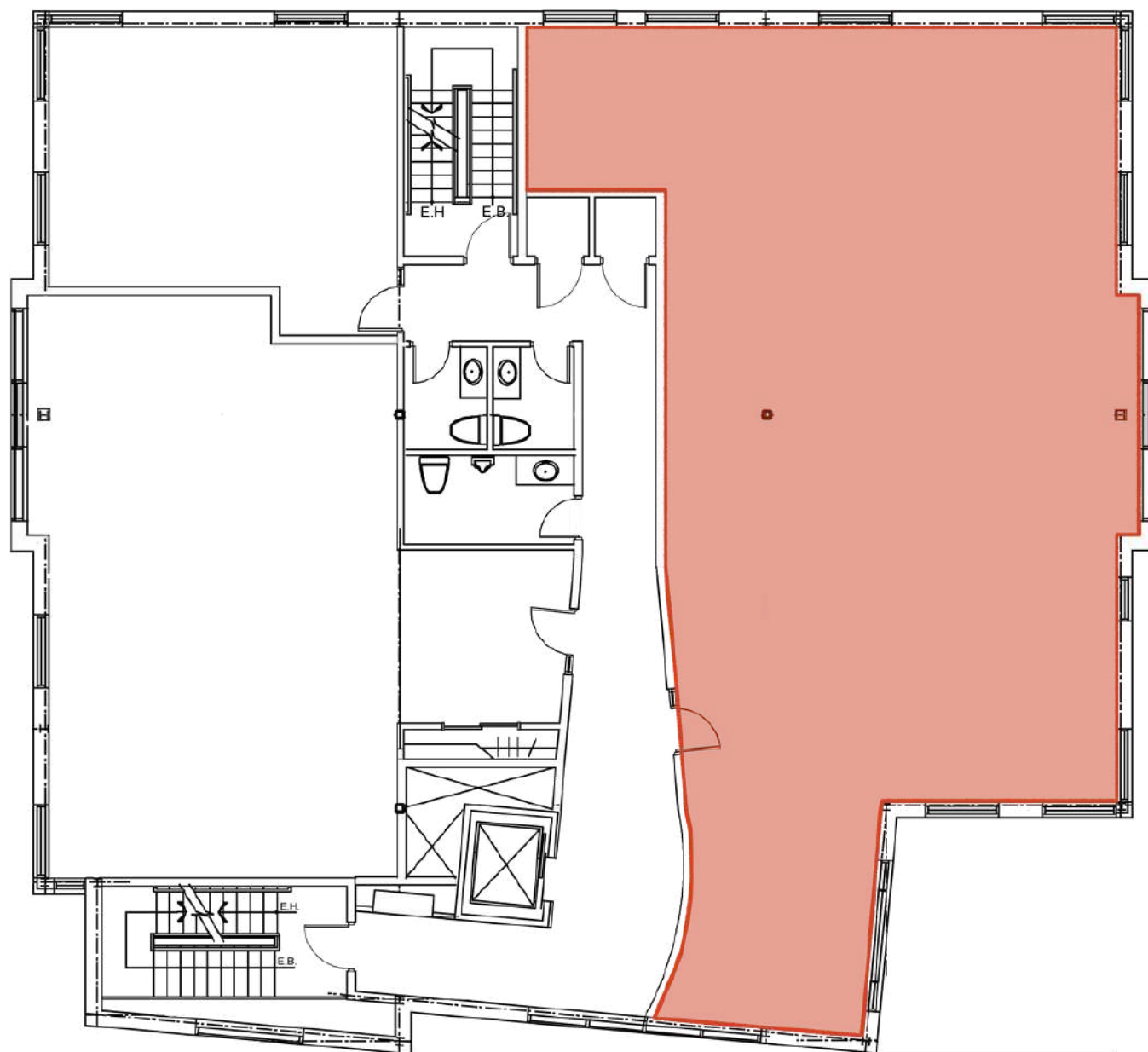


Security
Intrusion alarm



Certification
Energy-efficient

PLAN - Suite 201



A REAL ESTATE EXPERTISE THAT KEEPS ON GROWING

INTERCOM is there to assist in the decision-making process by determining and evaluating the possible alternatives with the assistance of our professional and knowledgeable real estate brokers supported by a strong administrative team; that is why we exist.



Michel
LABBÉ

Partner
Certified Real Estate Broker AEO
m.labbe@intercomsi.com

450 655-1334



INTERCOM
SERVICES IMMOBILIERS
Agence immobilière

This document has been prepared by Intercom Services Immobiliers for advertising and general information only. Intercom Services Immobiliers assumes no responsibility for any error or whatsoever omission. This information is submitted to the best of our knowledge and is subject to change without notice. This publication is the copyrighted property of Intercom Services Immobiliers and/or its licensor(s). © 2025 All rights reserved

September 8th, 2025