

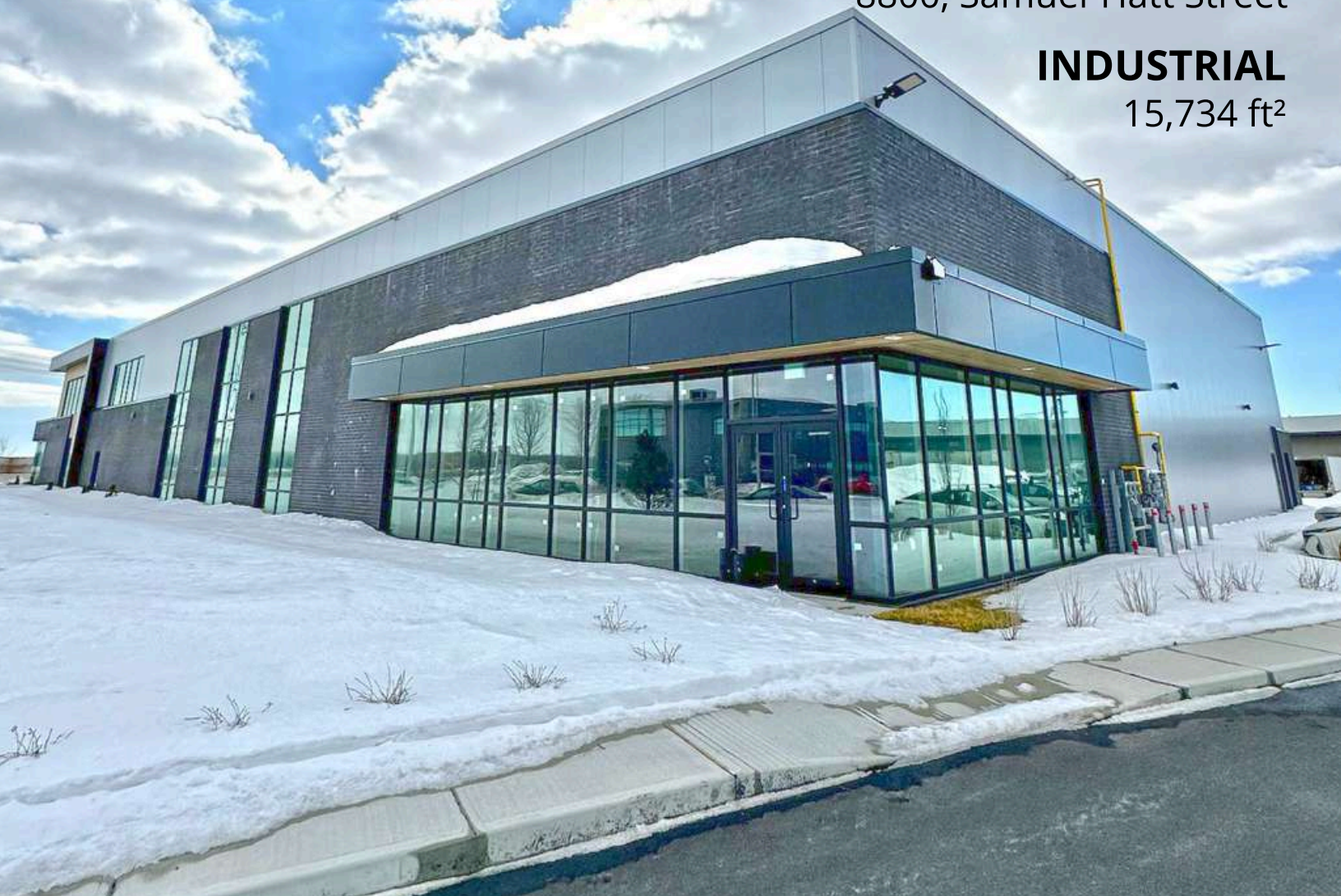
FOR SALE FOR RENT

CHAMBLY

8800, Samuel-Hatt Street

INDUSTRIAL

15,734 ft²



Michel LABBÉ

Certified Real Estate Broker AEO

m.labbe@intercomsi.com

450 655-1334

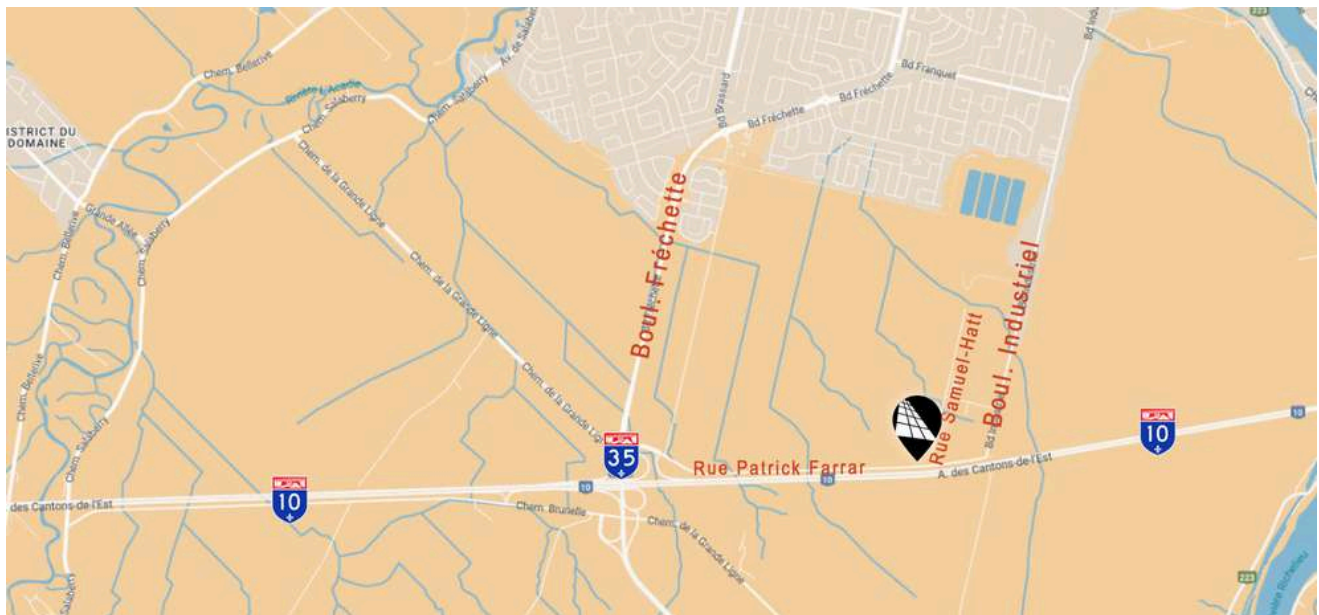


INTERCOM
SERVICES IMMOBILIERS
Agence immobilière

   intercomsi.com

HIGHLIGHTS

- Industrial condo for sale / for rent built in 2024
- Accessible and visible from Highway 10 (Exit 22), close to Highway 35
- 26 minutes from downtown Montreal
- Located in a growing industrial park
- Neighbor / Co-owner: Distillerie WfE
- The slab-on-grade has not yet been poured to facilitate the next occupant's move-in
- A shared shipping and receiving area is available, with a surface area of 959 ft²
- Newly built to accommodate the needs of the next occupant



LOCATION



Public Transit
385, 386, 487



Main Roads
10, 35



Road bridges
Samuel-de-Champlain Bridge (±27 km)

DEMOGRAPHY

(5km Radius)



42,894 Residents



31,336 Daytime Active Population



16,205 Households



\$147,699 average income/household

Sitewise - Estimated 2024 Statistics



MICHEL LABBÉ
450 655-1334



GENERAL INFORMATION

Asking Price	\$4,750,000
	\$288.28 / ft ²
Net Rent	\$18.00 / ft ²
Additional Rent	\$4.75 / ft ²
Electricity / Energy	Excluded
Parking (shared)	30 stalls
Availability	To be negotiated

AREAS

(approximates)

Condo (total)	15,734 ft²
Mezzanine	1,482 ft ²
Ground floor	14,252 ft ²
Shared Shipping / Receiving Area	959 ft ²
Land (shared)	67,402 ft ²





FEATURES



Construction
2024



Zoning
I-004



Lot #
6 565 317 (private)
6 565 315 (common)



Clearance height
22'8"



Shared loading docks
2 (8'x9')



Drive-in door (possible)
To be built-in



Lights
DEL



Columns
±33x36



Heating
Gas and electric

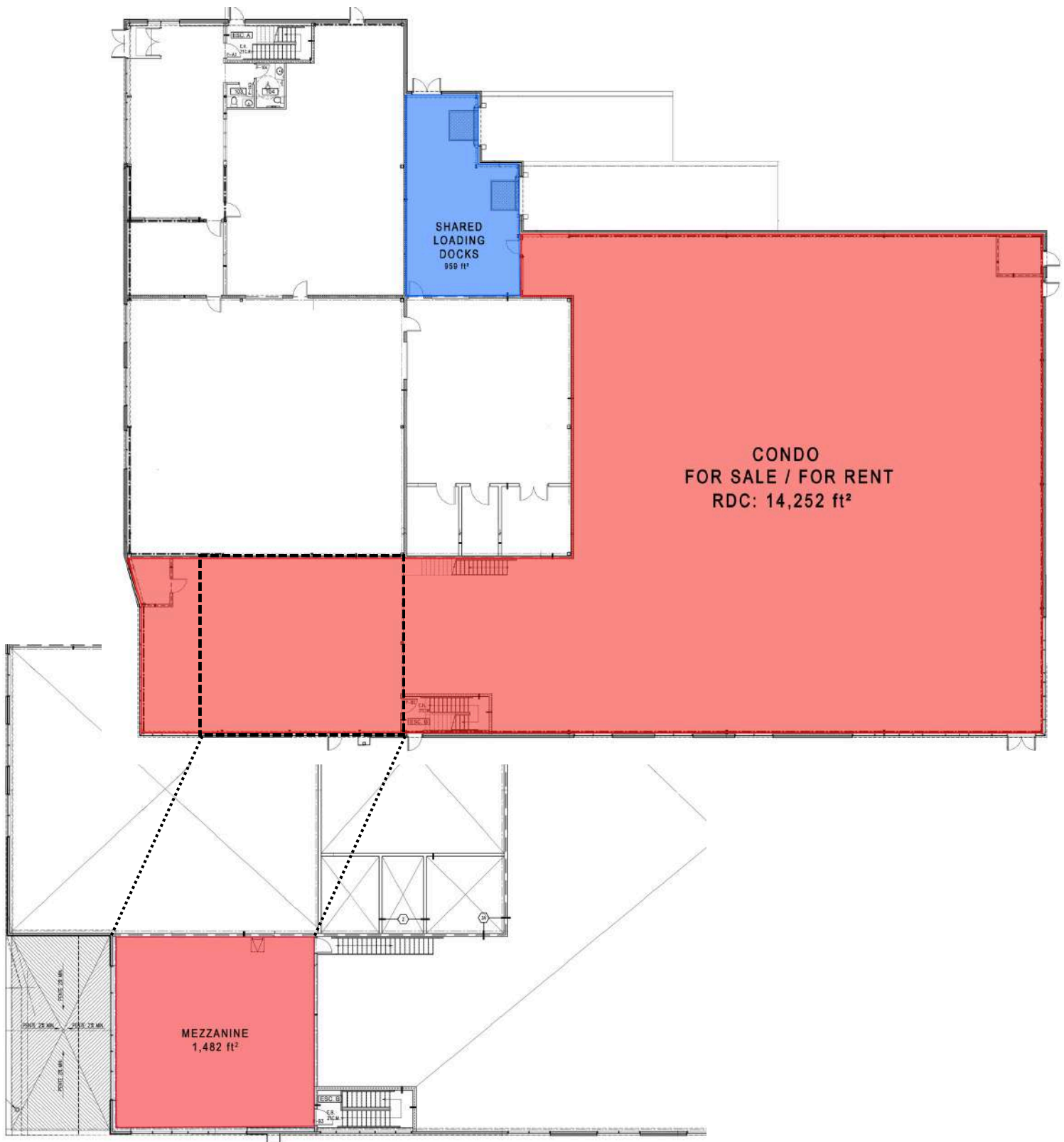


Electrical input
200 A, 600 V



MICHEL LABBÉ
450 655-1334

PLAN



PLAN



A REAL ESTATE EXPERTISE THAT KEEPS ON GROWING

INTERCOM is there to assist in the decision-making process by determining and evaluating the possible alternatives with the assistance of our professional and knowledgeable real estate brokers supported by a strong administrative team; that is why we exist.



Michel
LABBÉ*

Associate
Certified Real Estate Broker AEO
m.labbe@intercomsi.com

450 655-1334



INTERCOM
SERVICES IMMOBILIERS
Agence immobilière

*Immobilier Michel Labbé inc.

This document has been prepared by Intercom Services Immobiliers for advertising and general information only. Intercom Services Immobiliers assumes no responsibility for any error or whatsoever omission. This information is submitted to the best of our knowledge and is subject to change without notice. This publication is the copyrighted property of Intercom Services Immobiliers and/or its licensor(s) © 2025 All rights reserved.

May 14, 2025